

# WHAT'S DRIVING SUPPLY CHAIN WORKER TURNOVER?

- Q1 2022 -

**75%**  
OF TURNOVER  
COULD BE  
PREVENTED

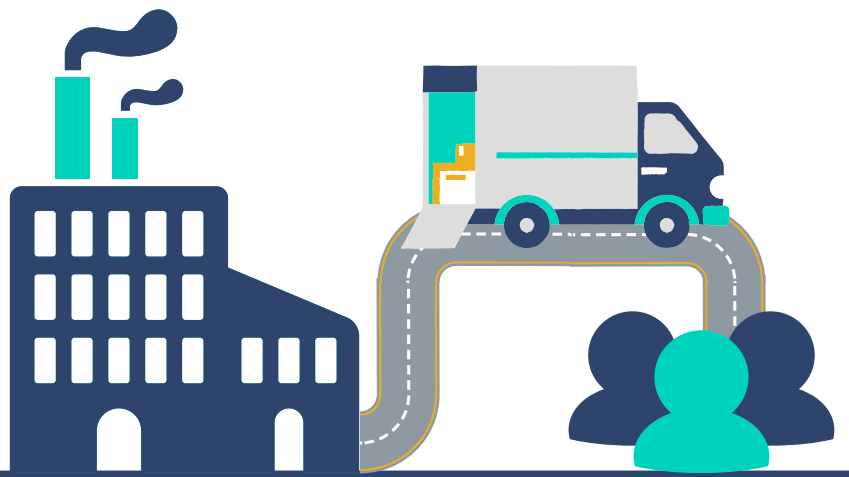
IF COMPANIES HAD  
BETTER INSIGHTS INTO  
THE TOP REASONS  
FOR FRONTLINE  
WORKER TURNOVER

WORKSTEP GATHERED  
ANONYMOUS FEEDBACK ON  
TURNOVER TRENDS FROM OVER

**19,620 EMPLOYEES**



ACROSS  
**165**  
SUPPLY CHAIN  
COMPANIES



AND FOUND  
**FEEDBACK**  
IS THE NEW PAY

FEEDBACK  
RANKED 2ND

WHILE PAY  
DROPPED FROM  
2ND TO 10TH



**BENEFITS**  
DIDN'T EVEN MAKE  
THE LIST IN Q4 2021  
AND NOW  
**RANKS #3**



AND  
**SAFETY**  
IS A GROWING  
CONCERN  
CLIMBING FROM  
**#7 to #4**



Q1 2022 TOP TURNOVER REASON  
FOR THE THIRD QUARTER IN A ROW:

**#1 CAREER GROWTH**

WHAT'S YOUR TOP TURNOVER REASON?

[workstep.com/retain](https://workstep.com/retain)